

Motor Driver Replacement

Safety

-First power down the Nomad 833 and unplug the power source.

Caution

-When reinstalling the 3M and 6M hardware screws should install easily. Make sure threads are properly aligned to prevent cross threading.

Step 1: Gather 2.5mm and 4mm allen (hex) wrenches used respectively for 3M and 6M screws. Rubbing alcohol and Q-tip are optional, but suggested.



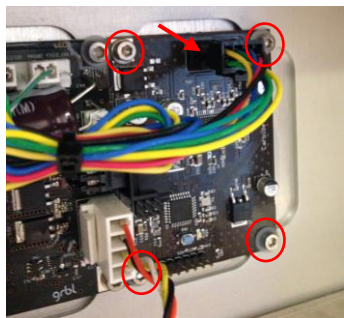
Step 2: Remove backing plates nine 3M and 2 6M screws.



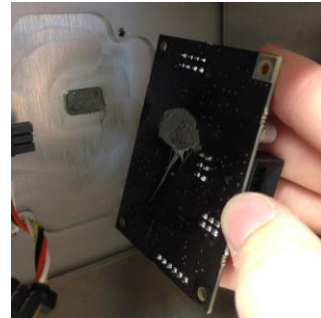
Step 3: Find motor driver to the right of the primary control board.



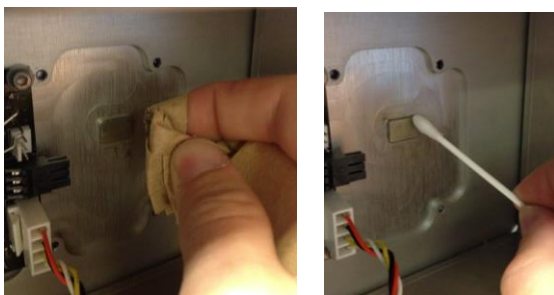
Step 4: Remove motor driver hardware (four 3M screws) and connector from top of PCB board.



Step 5: Remove motor driver by sliding it away to the right from the second connector.



Step 6: Remove thermal compound with dry paper towel (optional rubber alcohol with Q-tip).



Step 7: Install new motor driver and reassemble machine.

