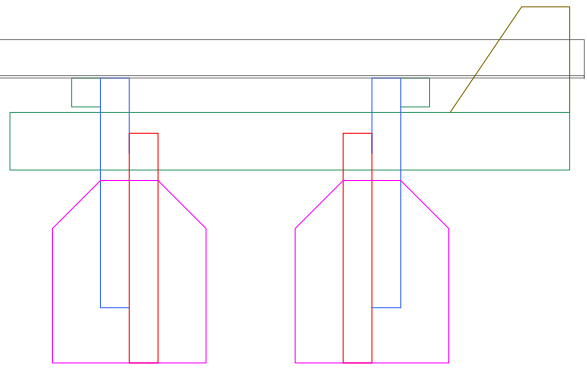


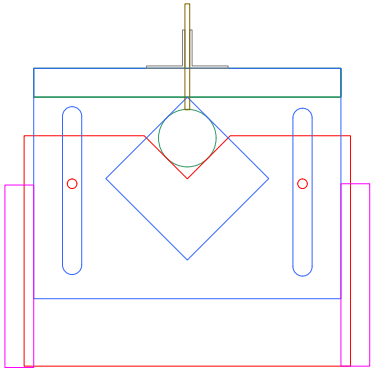
Guillotine Model Rocket Fin Jig
3/4 Plywood (2 Sets)



Side view showing typical fin placement on tube.

Modified original design making each end stand alone. This allows for variable length tubes.

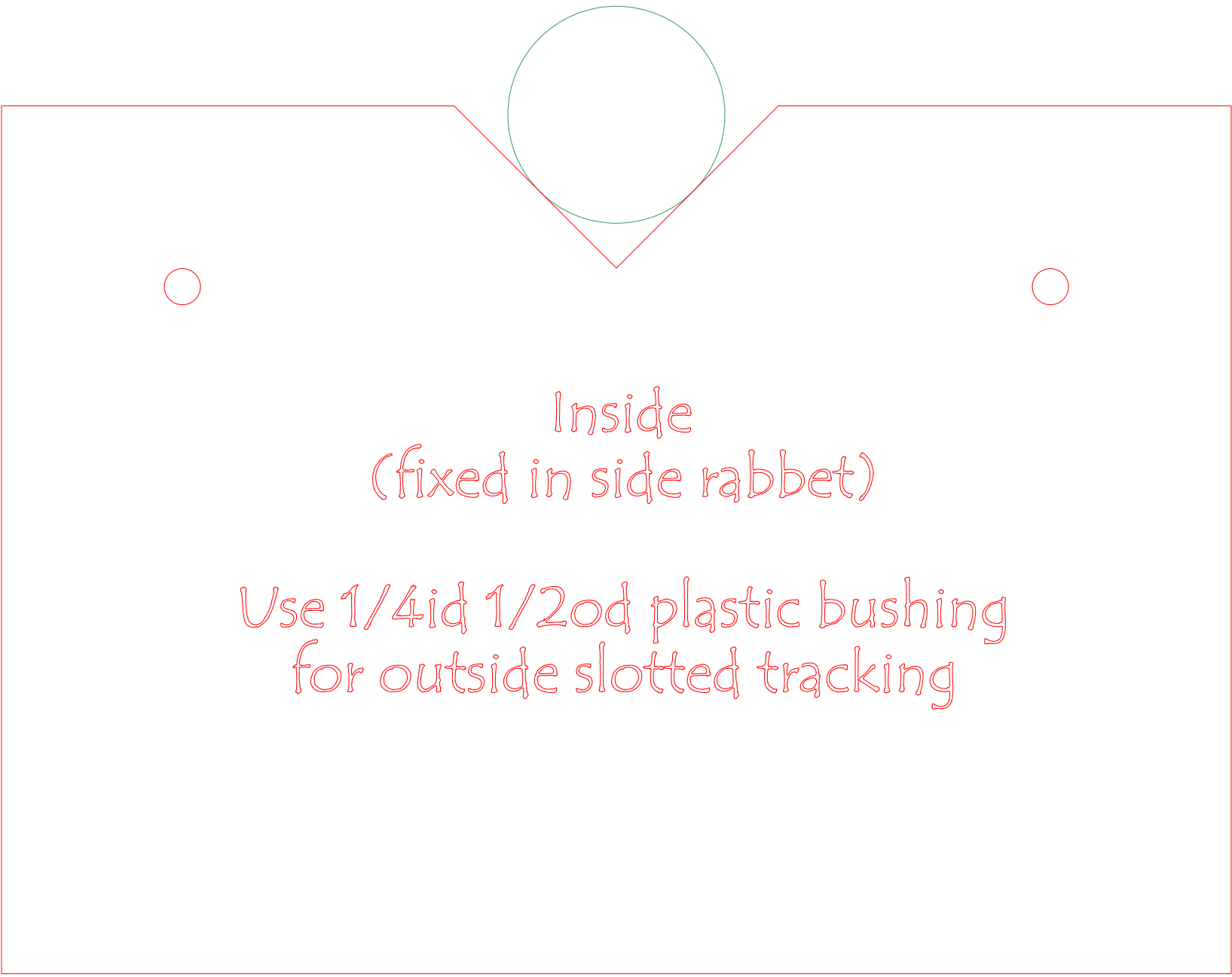
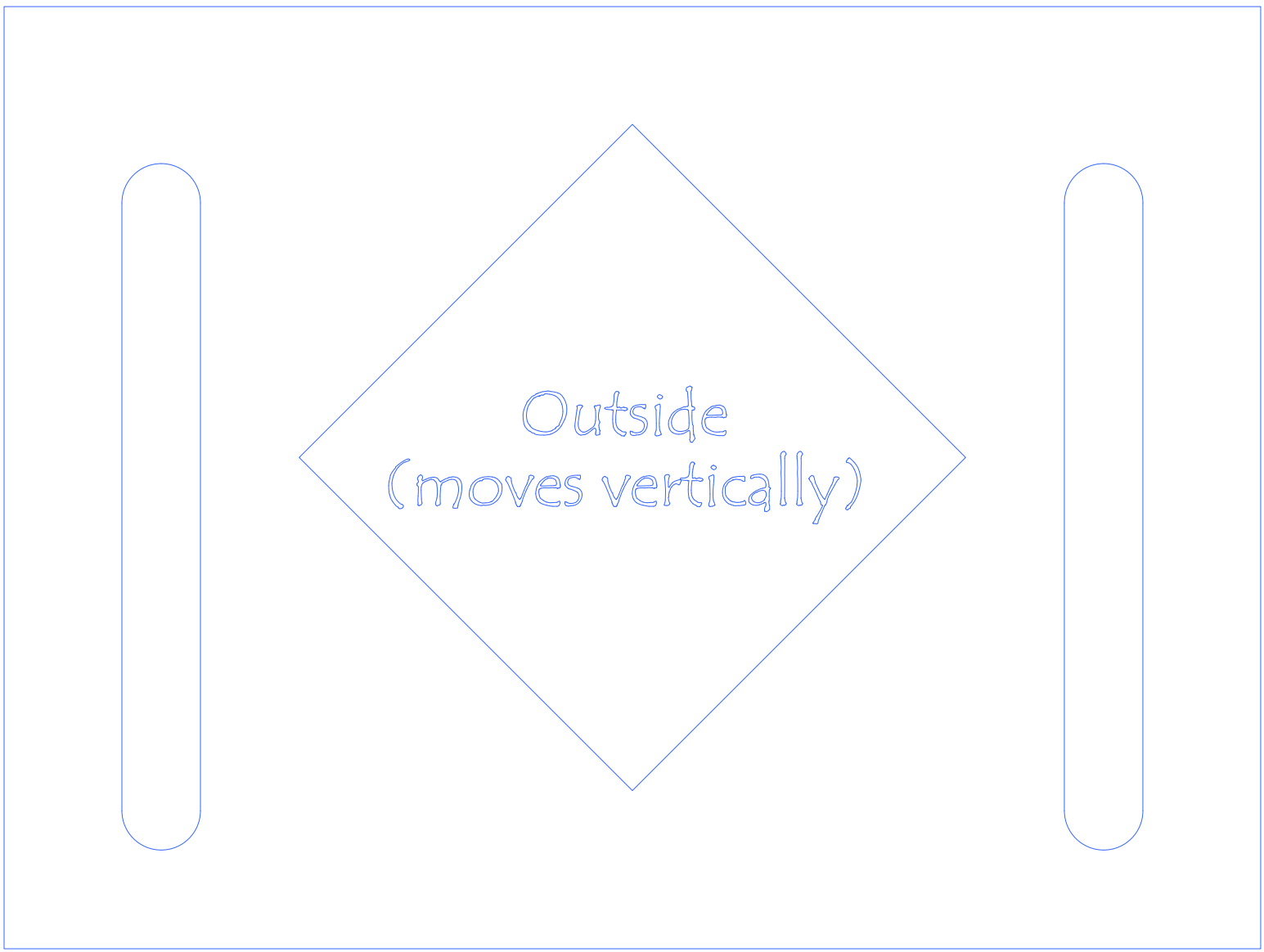
To keep the two guides aligned horizontally, clamp one side of each guide to a straight edge, such as a level.



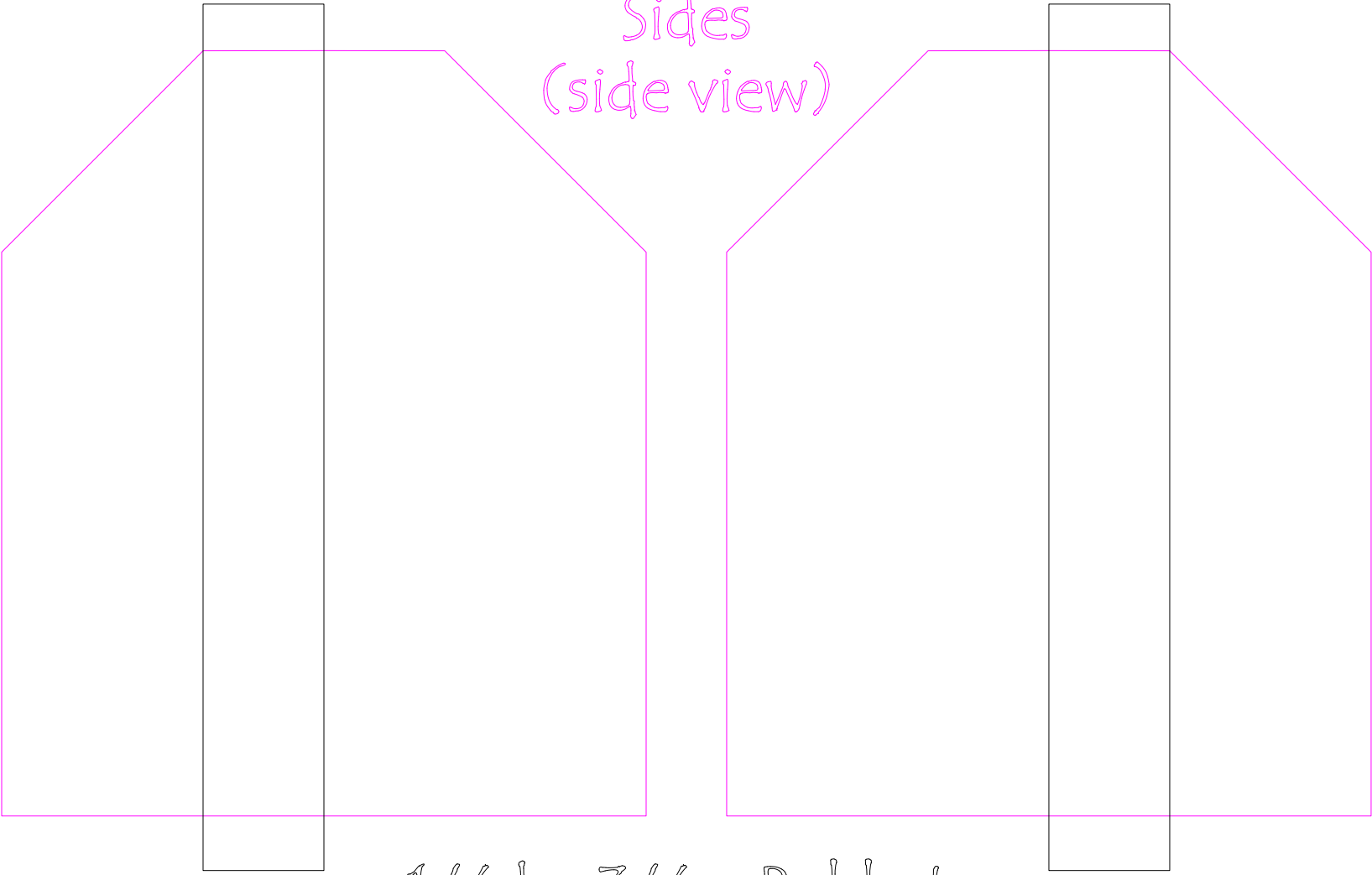
Front view showing typical fin placement on tube clamped between adjustable alluminum rails.

1/16 x 1
Alluminum Rails
(slotted for rail adj)

Rail (top view)



Sides
(side view)



1/4d x 3/4w Rabbets